

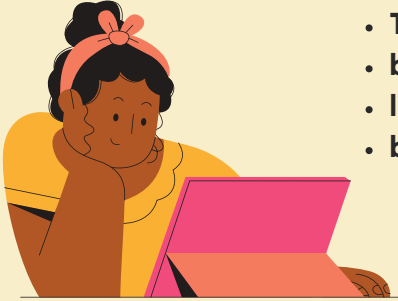


UNVEILING PERSPECTIVES (Project UP)



Criteria

- The young person or child must:
- be Black
- live outside of London & Greater London
- be between the ages of 5 and 25.



Background

We're providing free assessments of needs for Black children and young people with unidentified or unmet needs.

Through this project we want:

- families to be confident in recognising and understanding their child or young person's difficulties.
- to ensure they have the knowledge required to advocate fully for their child or young person.
- to ensure that every SEND Black child or young person has a positive, aspirational, and thriving education.

Please note these are not diagnostic assessments.

To find out more information or to register your interest please visit our website or contact us.



The Big



CONTACT US

hello@whatsthebige.com
07426 395 213

<https://whatsthebige.com/projectup/>

AVAILABLE

UNTIL 2028

Understanding the needs

- Do you feel that your child/young person learns in the same way as their peers?
- Do they struggle with communication, social interaction, or understanding instructions?
- Do they cope with changes in routine or unexpected situations?
- Do they react strongly to certain sounds, textures, lights or foods?
- Do they have difficulty with motor skills, such as handwriting, balance or coordination?
- Do they show signs of anxiety, frustration, or distress related to school/college?



Educational Progress & Support

- Have teachers raised any concerns about your child/young person's learning, behaviour, or progress?
- Do they receive extra help at school/college?
- Despite the support given, do you feel your child/young person still struggling to make progress?
- Have they been on a Special Educational Needs (SEN) register or received interventions, but there's still little to no improvement?



Home-School Relationships & Next Steps

- Have you had multiple meetings with the school/college, but the support isn't enough?
- Do you feel that the school/college understands your child/young person's needs and is providing the right level of help?
- Have you been advised that your child/young person needs a more structured or specialised approach to learning?
- Do you feel their needs are so significant that they require additional professional assessments or a different type of education setting?



Other questions

- Do you need help accessing resources for your child in their placement?
- Do you disagree with a diagnosis or misdiagnosis of your child?
- Is there a long waiting list for you to access an assessment for your child?
- Have you noticed new patterns that you believe could relate to SEND?
- Do you feel the communication between you and your child/young person's institution has been less than acceptable?
- Are you aware of what the assessment process is and its outcomes?



If you answer 'yes' to two or more of these questions or feel that your child/young person's needs are not being met, this may indicate that a needs assessment is necessary to identify the needs, to ensure the right support is in place.

The Big



CONTACT US

hello@whatsthebig.com
07426 395 213